



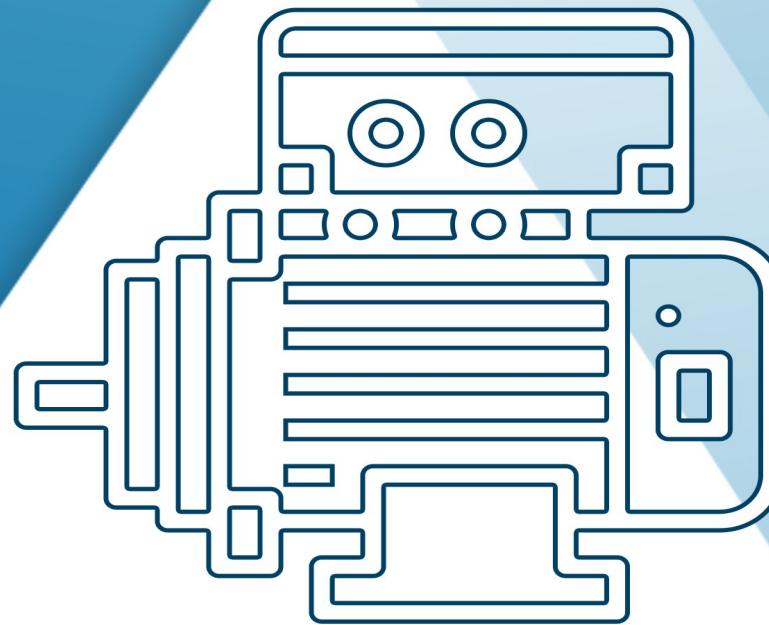
الکتروموتور کاجاله



 kalasanati.com

 [@kalasanati.ir](https://www.instagram.com/kalasanati.ir)

 [+982188544230](tel:+982188544230)



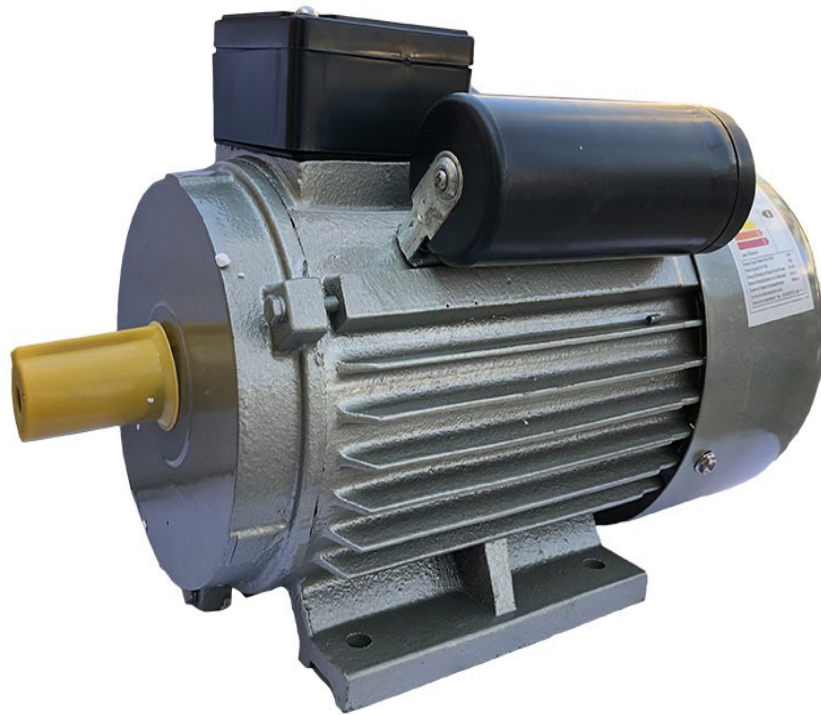
Catalog 2021

ELECTRICMOTOR

www.kalasanati.com



Kalasanati.com
Training, Selecting, Purchasing



Electromotor
Kalasanati.com



Kalasanati.com

CDF,SDF series

THREE-PHASE ASYNCHRONOUS INDUCTION MOTORS, NEW GENERATION **Green line.**

EFF 2 EFF 1



Introduced

CDFE2, CDFE1 series motor is the newest style motor we developed in 2002. The output and mounting dimension is same as Y2 series. The outstanding features are: All motors efficiency exceeds CEMEP-EU Eff2, Eff1 and Australia MEPS / High Efficiency standard. The end user can benefit from energy saving (See introduction) . Its appearance is same as popular European style. The end cover with pin and terminal box on top can turn in four directions (terminal box on the right or left on request). The DE and NDE bearing are same, re-greasing system equipped on the end-shield, which is convenient to maintain. In the meantime, insulation material and insulation technology are better than before. No-solvent varnish and VPI make motor have excellent insulated capability and longer working time.

Operating conditions

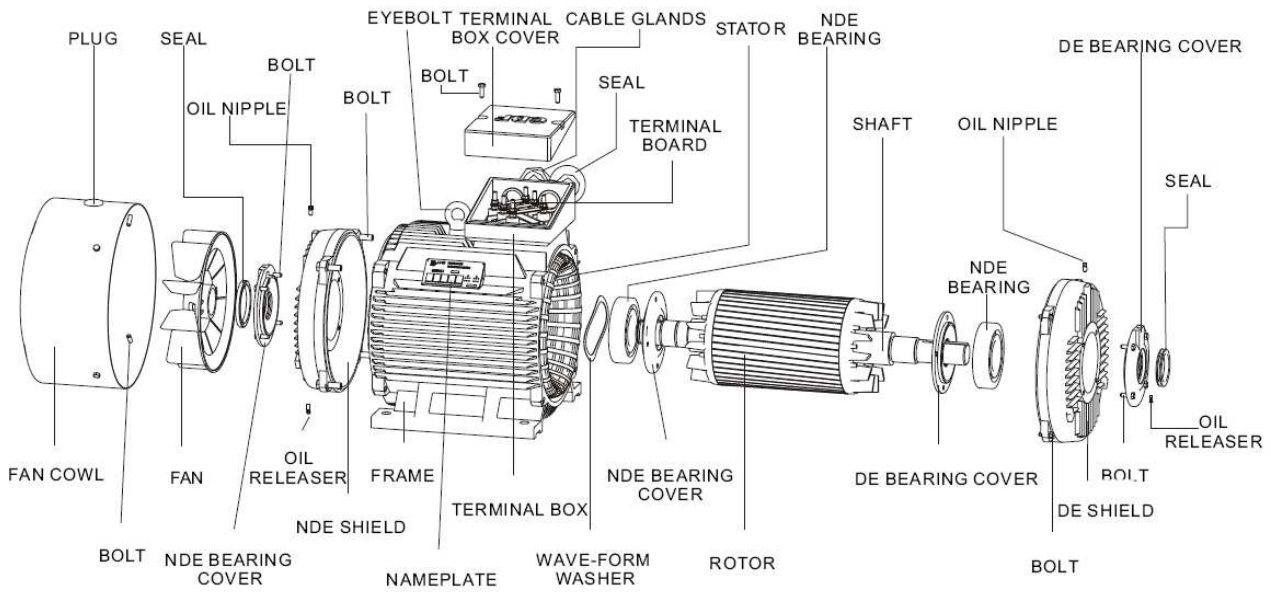
Temperature -15 až 40°C
Altitude: ≤1000m
Duty: S1

Frquency: 50, 60Hz
Protection class: IP 55

Rated voltage: 220/760V
Insulation class: F,H

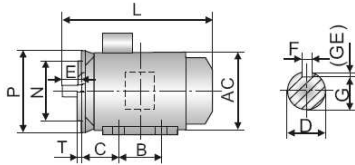


TECHNICAL DATA CDF, SDF

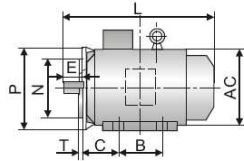


BEARING SIZE

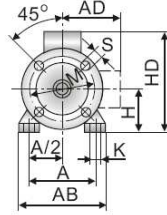
Frame size	Poles	Y2 series		CDF series		SDF series	
		Drive end	Non-Drive end	Drive end	Non-Drive end	Drive end	Non-Drive end
160	2~8	6309	6309	6309	6309	6309	6309
180	2~8	6311	6311	6311	6311	6311	6311
200	2~8	6312	6312	6312	6312	6312	6312
225	2~8	6313	6313	6313	6313	6313	6313
250	2~8	6314	6314	6314	6314	6314	6314
280	2	6314	6314	6314	6314	6314	6314
	4~8	6317	6317	6317	6317	6317	6317
315	2	6317	6317	6317	6317	6317	6317
	4~10	6319	6319	6319	6319	6319	6319
355	2	6319	6319	6319	6319	6319	6319
	4~10	Nu322	6322	Nu322	6322	Nu322	6322



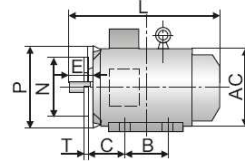
H63~90



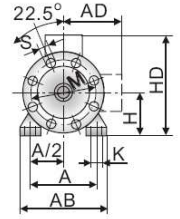
H100~132



H63~200

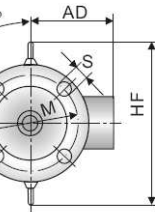
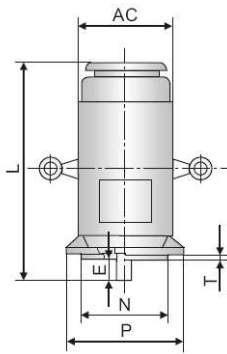


H160~355

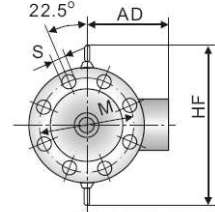


H225~355

Frame size	Flange	Poles	Mounting dimensions														Flange holes	Overall dimensions						
			A	A/2	B	C	D	E	F	G	H	K	M	N	P	R		S	T	AB	AC	AD	HD	L
180M	FF300		279	139.5	241	121	48	110	14	42.5	180	15	300	250	350				4	335	380	280	455	700
180L	FF350		318	159	279	133	55		16	49	200		350	300	400					395	420	305	545	770
225S		4.8		286		60	140	18	53															815
225M	FF400	2	356	178		55	110	16	49	225	19	400	350	450						435	470	335	555	820
		4.6.8				60																		845
250M		2	406	203	349	168			18	53										490	510	370	615	900
		4.6.8				65				58														
280S	FF500	2			368				20	67.5	24	500	450	550										985
		4.6.8				75	140		18	58	280													
280M		2	457	228.5		65			20	67.5										550	580	410	680	1035
		4.6.8			419				18	58														
315S		2			406				80	170	22	71												1160
		4.6.8.10				65			6	140	18	58												1270
315M	FF600	2	508	254		80	170	22	71		315		600	550	660					635	645	530	845	1190
		4.6.8.10			457	216			65	140	18	58												1300
315L		2			508				80	170	22	71												1190
		4.8				80	170	22	71															1300
355M	FF740	2			560				75	140	20	67.5												1500
		4.6.8.10	610	305		95	170	25	86				740	680	800									1530
		2			630	254			75	140	20	67.5												1500
355L		4.6.8.10				95	170	25	86		355									730	710	655	1010	1530



H180~200



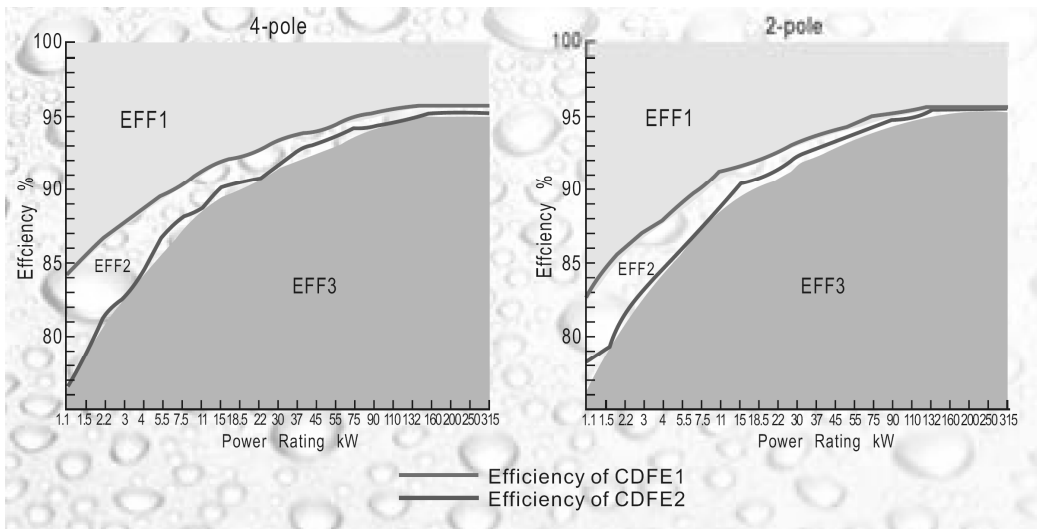
H225~355

Frame size	Flange	Poles	Mounting dimensions										Flange holes	Overall dimensions										
			D	E	F	G	M	N	P	R	S	T		AC	AD	HF	L							
180M	FF300	2.4.6.8	48	110	14	42.5	300	250	350										4	380	280	500	760	
180L	FF350		55		16	49	350	300	400												420	305	550	800
225S		4.8	60	140	18	53																		840
225M	FF400	2	55	110	16	49	400	350	450												470	335	610	905
		4.6.8				60																		910
250M		2	60			53															510	370	650	935
		4.6.8				18																		1015
280S	FF500	2			65				58															
		4.6.8			140				20	67.5	500	450	550											1110
280M		2	457	228.5		65			18	58														
		4.6.8				75			20	67.5														1150
315S		2			406				18	58														1280
		4.6.8.10				80	170	22	71															1510
315M	FF600	2	508	254		65	140	18	58		600	550	660											1310
		4.6.8.10			457	216			80	170	22	71												1430
315L		2			508				65	140	18	58												1310
		4.6.8.10				80	170	22	71															1430
355M	FF740	2			560				75	140	20	67.5												1640
		4.6.8.10	610	305		95	170	25	86				740	680	800									1670
		2			630	254			75	140	20	67.5												1640
355L		4.6.8.10				95	170	25	86		355										710	655	1010	1670



TECHNICAL DATA CDF, SDF

Kalasanati.com



MODEL	Output		Current (A)		Speed /min	Eff %	Power factor	Tstart/Tn	Istart/In	Tmaxd/Tn
	kW	HP	380V	400V						

2 pól/3000ot

CDFE2-180M-2	22	30	41	39	2340	90.6	0.9	2	7.7	2.7
CDFE2-200L1-2	30	40	56	53	2945	91.6	0.9	2.1	6.9	2.8
CDFE2-200L2-2	37	50	68	64	2945	92.2	0.9	2.2	7	2.6
CDFE2-225M-2	45	60	81	77	2950	92.7	0.9	2.4	7.3	3.1
CDFE2-250M-2	55	75	100	95	2965	93.1	0.9	2.6	7.6	3.1
CDFE2-280S-2	75	100	134	127	2965	93.8	0.91	2.2	7.8	2.5
CDFE2-280M-2	90	125	160	152	2965	94.1	0.91	2.2	7.8	2.5
CDFE2-315S-2	110	150	196	186	2975	94.4	0.91	1.8	7.1	2.4
CDFE2-315M-2	132	180	234	222	2975	94.9	0.91	1.8	7.1	2.4
CDFE2-315L1-2	160	215	280	266	2975	95.1	0.92	1.8	7.1	2.5
CDFE2-315L2-2	200	270	348	331	2975	95.2	0.92	1.8	7.1	2.5
CDFE2-355M-2	250	340	432	410	2970	95.3	0.92	1.6	7.3	2.2
CDFE2-355L-2	315	420	543	515	2970	95.6	0.92	1.6	7.3	2.2

MODEL	Output		Current (A)		Speed /min	Eff %	Power factor	Tstart/Tn	Istart/In	Tmaxd/Tn
	kW	HP	380V	400V						

4 pól/1500 ot

CDFE2-180M-4	18.5	25	36	34	1470	90.5	0.87	2.2	7	3
CDFE2-180L-4	22	30	42	40	1470	91	0.87	2.2	7	2.7
CDFE2-200L-4	30	40	58	55	1470	92	0.86	2.2	7.2	3
CDFE2-225S-4	37	50	70	66	1475	92.5	0.87	2.2	6.9	2.8
CDFE2-225M-4	45	60	85	80	1475	92.8	0.87	2.2	7	3
CDFE2-250M-4	55	75	103	98	1475	93.1	0.87	2.2	7.4	2.8
CDFE2-280S-4	75	100	140	133	1485	93.8	0.87	2.2	7.5	2.4
CDFE2-280M-4	90	125	167	159	1485	94.2	0.87	2.2	7.5	2.4
CDFE2-315S-4	110	150	201	191	1485	94.5	0.88	2.2	6.9	2.7
CDFE2-315M-4	132	180	241	229	1485	94.8	0.88	2.2	6.9	2.6
CDFE2-315L1-4	160	215	288	273	1485	95.1	0.89	2.2	6.9	2.4
CDFE2-315L2-4	200	270	350	342	1485	95.2	0.89	2.2	6.9	2.4
CDFE2-355M-4	250	340	440	415	1490	95.3	0.91	2.3	6.8	2.3
CDFE2-355L-4	315	420	550	520	1490	95.6	0.91	2.3	6.8	2.3



TECHNICAL DATA CDF, SDF

Kalasanati.com

MODEL	Output		Current (A)		Speed /min	Eff %	Power factor	Tstart/Tn	Istart/In	Tmaxd/Tn
	kW	HP	380V	400V						
6 pol/1000ot										
CDFE2-180L-6	15	20	31	29	970	89	0.83	2.1	7.0	2.2
CDFE2-200L1-6	18.5	25	38	38	975	90	0.82	2.1	6.5	2.8
CDFE2-200L2-6	22	30	45	42	975	90.4	0.83	2.1	6.5	2.7
CDFE2-225M-6	30	40	58	55	980	91.5	0.85	2.1	6.9	2.5
CDFE2-250M-6	37	50	71	68	980	92	0.86	2.3	6.9	2.3
CDFE2-280S-6	45	60	86	82	980	92.5	0.86	2.3	7.0	2.7
CDFE2-280M-6	55	75	105	100	980	92.9	0.86	2.3	7.0	2.7
CDFE2-315S-6	75	100	142	135	980	93.6	0.86	2	7.0	2.4
CDFE2-315M-6	90	125	170	160	935	93.9	0.86	2	7.0	2.4
CDFE2-315L1-6	110	150	207	197	935	94.3	0.86	2.1	7.0	2.4
CDFE2-315L2-6	132	180	245	233	935	94.8	0.87	2.1	7.0	2.3
CDFE2-355M1-6	160	215	293	277	935	94.9	0.88	2	7.0	2.0
CDFE2-355M2-6	200	270	363	345	990	95	0.88	2	7.0	2.0
CDFE2-355L-6	250	340	450	425	990	95	0.89	2.3	7.0	2.5

MODEL	Output		Current (A)		Speed /min	Eff %	Power factor	Tstart/Tn	Istart/In	Tmaxd/Tn
	kW	HP	380V	400V						
8 pol/700ot										
CDFE2-180L-8	11	15	25	24	730	87	0.76	2.2	6.2	2.0
CDFE2-200L1-8	15	20	35	32	730	88.5	0.76	2.2	6.2	2.8
CDFE2-200L2-8	18.5	25	40	38	730	89.6	0.77	2.2	6.8	2.8
CDFE2-225M-8	22	30	47	44	740	89.7	0.8	2.2	6.7	2.3
CDFE2-250M-8	30	40	63	60	740	91	0.8	1.9	5.5	2.9
CDFE2-280S-8	37	50	78	74	740	91.5	0.79	2	6.6	2.8
CDFE2-280M-8	45	60	95	90	740	92	0.79	2	6.6	2.4
CDFE2-315S-8	55	75	115	110	740	92.8	0.81	1.8	6.6	2.4
CDFE2-315M-8	75	100	150	145	740	93.5	0.81	1.8	6.6	2.2
CDFE2-315L1-8	90	125	180	170	740	93.8	0.82	1.8	6.6	2.2
CDFE2-315L2-8	110	150	220	205	740	94.1	0.82	1.9	6.6	2.3
CDFE2-355M1-8	132	180	265	250	740	94.4	0.82	1.9	6.5	2.3
CDFE2-355M2-8	160	220	315	300	740	94.7	0.83	1.9	6.5	2.0
CDFE2-355L-8	200	270	386	367	740	94.8	0.83	1.9	6.5	2.0

MODEL	Output		Current (A)		Speed /min	Eff %	Power factor	Tstart/Tn	Istart/In	Tmaxd/Tn
	kW	HP	380V	400V						
10 pol/600ot										
CDFE2-315S-10	45	60	100	95	590	91.5	0.75	1.5	6.2	2.0
CDFE2-315M-10	55	75	122	115	590	92	0.75	1.5	6.2	2.0
CDFE2-315L1-10	75	100	163	155	590	92.5	0.76	1.5	6.2	2.0
CDFE2-315L2-10	90	125	191	182	590	93	0.77	1.5	6.2	2.0
CDFE2-355M1-10	110	150	230	218	590	93.2	0.78	1.3	6.0	2.0
CDFE2-355M2-10	132	180	275	261	590	93.5	0.78	1.3	6.0	2.0
CDFE2-355L-10	160	220	333	317	590	93.5	0.78	1.3	6.0	2.0



TECHNICAL DATA CDF, SDF

MODEL	Output		Current (A)		Speed /min	Eff %	Power factor	Tstart /Tn	Istart /In	Tmaxd /Tn
	kW	HP	380V	400V						

2 pol/3000ot

CDFE1-180M-2	22	30	40.2	38.2	2940	92.4	0.9	8.1	2	2.3
CDFE1-200L1-2	30	40	54.5	51.7	2950	93	0.9	8.1	2	2.3
CDFE1-200L2-2	37	50	66.8	63.5	2950	93.5	0.9	8.1	2	2.3
CDFE1-225M-2	45	60	81.0	76.9	2960	93.8	0.9	8.1	2	2.3
CDFE1-250M-2	55	75	97.5	92.6	2970	94.2	0.91	8.1	2	2.3
CDFE1-280S-2	75	100	131	124	2960	94.8	0.92	8.1	2	2.3
CDFE1-280M-2	90	125	156	149	2960	95	0.92	7.7	2	2.3
CDFE1-315S-2	110	150	193	183	2980	95.2	0.91	7.7	1.8	2.2
CDFE1-315M-2	132	180	231	219	2980	95.5	0.91	7.7	1.8	2.2
CDFE1-315L1-2	160	220	277	263	2980	95.5	0.92	7.7	1.8	2.2
CDFE1-315L2-2	200	270	346	328	2980	95.6	0.92	7.7	1.8	2.2
CDFE1-355M-2	250	340	432	411	2980	95.5	0.92	7.7	1.6	2.2
CDFE1-355L-2	315	430	544	516	2980	95.7	0.92	7.7	1.6	2.2

MODEL	Output		Current (A)		Speed /min	Eff %	Power factor	Tstart /Tn	Istart /In	Tmaxd /Tn
	kW	HP	380V	400V						

4 pol/1500ot

CDFE1-180L-4	22	30	41.0	38.9	1470	92.7	0.88	7.9	2.2	2.3
CDFE1-200L-4	30	40	53.6	50.9	1470	93.4	0.91	7.9	2.2	2.3
CDFE1-225S-4	37	50	68.1	64.7	1475	93.8	0.88	7.9	2.2	2.3
CDFE1-225M-4	45	60	81.7	77.6	1475	94	0.89	7.9	2.2	2.3
CDFE1-250M-4	55	75	99.4	94.4	1480	94.5	0.89	7.9	2.2	2.3
CDFE1-280S-4	75	100	135	128	1475	95	0.89	7.9	2.2	2.3
CDFE1-280M-4	90	125	161	153	1475	95.3	0.89	7.9	2.2	2.3
CDFE1-315S-4	110	150	197	187	1490	95.5	0.89	7.6	2.1	2.2
CDFE1-315M-4	132	180	235	224	1490	95.7	0.89	7.6	2.1	2.2
CDFE1-315L1-4	160	220	285	271	1490	95.8	0.89	7.6	2.1	2.2
CDFE1-315L2-4	200	270	353	335	1490	95.7	0.9	7.6	2.1	2.2
CDFE1-355M-4	250	340	451	428	1485	95.8	0.88	7.6	2.1	2.2
CDFE1-355L-4	315	430	561	533	1485	95.8	0.89	7.6	2.1	2.2



TECHNICAL DATA CDF, SDF

Kalasanati.com

MODEL	Output		Current (A)		Speed /min	Eff %	Power factor	Tstart /Tn	Istart /In	Tmaxd /Tn
	kW	HP	380V	400V						

6 pol/1000 ot

CDFE1-180L-6	15	20	31.0	29.4	970	90.9	0.81	7.5	2.0	2.1
CDFE1-200L1-6	18.5	25	37.9	36.0	970	91.5	0.81	7.5	2.1	2.1
CDFE1-200L2-6	22	30	43.8	41.6	970	92	0.83	7.5	2.1	2.1
CDFE1-225M-6	30	40	57.1	54.3	980	92.8	0.86	7.5	2.0	2.1
CDFE1-250M-6	37	50	70.1	66.6	980	93.2	0.86	7.5	2.1	2.1
CDFE1-280S-6	45	60	84.8	80.6	980	93.7	0.86	7.5	2.1	2
CDFE1-280M-6	55	75	103.5	98.3	980	93.9	0.86	7.5	2.1	2
CDFE1-315S-6	75	100	137	130	990	94.5	0.88	7.5	2.0	2
CDFE1-315M-6	90	125	164	156	990	94.9	0.88	7.3	2.0	2
CDFE1-315L1-6	110	150	199	190	990	95.2	0.88	7.3	2.0	2
CDFE1-315L2-6	132	180	241	229	990	95.5	0.87	7.3	2.0	2
CDFE1-355M1-6	160	220	289	274	990	95.7	0.88	7.3	1.9	2
CDFE1-355M2-6	200	270	360	342	990	95.8	0.88	7.3	1.9	2
CDFE1-355L-6	250	340	452	429	990	95.6	0.88	7.3	1.9	2

MODEL	Output		Current (A)		Speed /min	Eff %	Power factor	Tstart /Tn	Istart /In	Tmaxd /Tn
	kW	HP	380V	400V						

8 pol/750 ot

CDFE1-180L-8	11	15	24.7	23.5	730	89	0.76	6.8	2	2.0
CDFE1-200L1-8	15	20	33.2	31.5	730	90.4	0.76	6.8	2	2.0
CDFE1-200L2-8	18.5	25	40.7	38.7	730	90.9	0.76	6.8	1.9	2.0
CDFE1-225M-8	22	30	46.3	44.0	730	91.4	0.79	6.8	1.9	2.0
CDFE1-250M-8	30	40	62.5	59.4	730	92.3	0.79	6.8	1.9	2.0
CDFE1-280S-8	37	50	75.8	72.0	730	92.7	0.8	6.8	1.9	2.0
CDFE1-280M-8	45	60	91.5	86.9	730	93.4	0.8	6.8	1.9	2.0
CDFE1-315S-8	55	75	109	103	740	93.8	0.82	6.8	1.8	2.0
CDFE1-315M-8	75	100	147	140	740	94.6	0.82	6.8	1.8	2.0
CDFE1-315L1-8	90	125	174	165	740	94.9	0.83	6.8	1.8	2.0
CDFE1-315L2-8	110	150	206	196	740	95.3	0.85	6.6	1.8	2.0
CDFE1-355M1-8	132	180	244	232	740	95.6	0.86	6.6	1.8	2.0
CDFE1-355M2-8	160	220	292	277	740	95.8	0.87	6.6	1.8	2.0
CDFE1-355L-8	200	270	365	346	740	95.8	0.87	6.6	1.8	2.0

MODEL	Output		Current (A)		Speed /min	Eff %	Power factor	Tstart /Tn	Istart /In	Tmaxd /Tn
	kW	HP	380V	400V						

10 pol/600 ot

CDFE1-315S-10	45	60	98	93	590	93.2	0.75	1.5	6.2	2.0
CDFE1-315M-10	55	75	119	113	590	93.6	0.75	1.5	6.2	2.0
CDFE1-315L1-10	75	100	159	151	590	94.3	0.76	1.5	6.2	2.0
CDFE1-315L2-10	90	125	188	178	590	94.6	0.77	1.5	6.2	2.0
CDFE1-355M1-10	110	150	225	214	590	95.1	0.78	1.3	6.0	2.0
CDFE1-355M2-10	132	180	269	256	590	95.5	0.78	1.3	6.0	2.0
CDFE1-355L-10	160	220	326	310	590	95.6	0.78	1.3	6.0	2.0